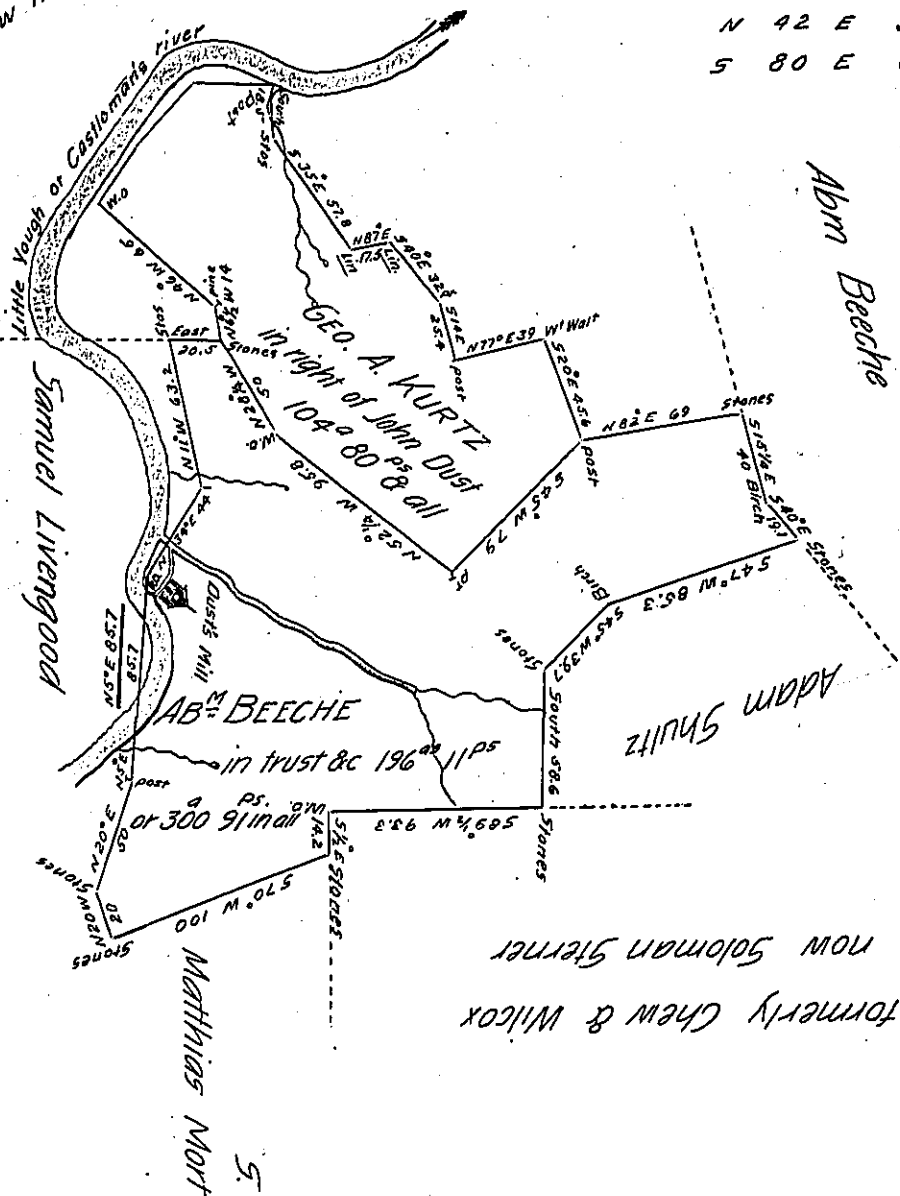


Benjamin Chew or Chew & Wilcox
 (Called Benjamin Shew in Warrant)

Courses & Distances down the river
 from W.O. to Post
 N 35° E 27
 N 42 E 35
 S 80 E 34.5

as ps
 104 80 Dust
 196 11 Beeche
 300 91 together



now Solomon Sterner
 formerly Chew & Wilcox

Situate on the East Side of Castleman's River in Elk Lick Township Somerset County & Surveyed the 27th day of January 1826 in pursuance of two Warrants; the 1st Granted to John Dust for 100 as dated the 8th May 1795; the other for 196 acres Granted to Ab^m Beechee Ex^r of George A. Kurtz Dec^d in trust &c dated 5th Jan'y 1826.

Certified this 28th Jan'y 1826 pr Bernard Connelly Jr.

To Gabriel Hiester Esq S. G. Pa. D. S. Som^t Co

N. B. Castleman's river was also called Little Yough

as in Dust's Warrant B. C.

IN TESTIMONY that the above is a copy of the original remaining on file in the Department of Internal Affairs of Pennsylvania, made conformably to an Act of Assembly approved the 16th day of February, 1833, I have hereunto set my Hand and caused the Seal of said Department to be affixed at Harrisburg, this twenty second day of July 1904.

James P. Benson
 Secretary of Internal Affairs.